

Anti-CLDN18.2 hlgG1 Antibody(LM-102)

Product information

GM-81801AB-10	10 µg
GM-81801AB-100	100 µg
GM-81801AB-1000	1 mg

Antibody Information

Species Reactivity	Human;
Clone	LM-102
Source/Isotype	Monoclonal human IgG1, κ
Application	Flow cytometry
Specificity	Detects CLDN18.2
Gene	CLDN18.2
Other Names	/
Gene ID	51208(Human);
Background	The claudin18.2 (CLDN18.2) protein, an isoform of claudin18, a member of the tight junction protein family, is a highly selective biomarker with limited expression in normal tissues and often abnormal expression during the occurrence and development of various primary malignant tumors, such as gastric cancer/gastroesophageal junction (GC/GEJ) cancer, breast cancer, colon cancer, liver cancer, head and neck cancer, bronchial cancer and non-small-cell lung cancer. CLDN18.2 participates in the proliferation, differentiation and migration of tumor cells. Recent studies have identified CLDN18.2 expression as a potential specific marker for the diagnosis and treatment of these tumors. With its specific expression pattern, CLDN18.2 has become a unique molecule for targeted therapy in different cancers, especially in GC; for example, agents such as zolbetuximab (claudiximab, IMAB362), a monoclonal antibody (mAb) against CLDN18.2, have been developed.
Storage	Store at 2-8°C short term (1-2 weeks).Store at ≤ -20°C long term. Avoid repeated freeze-thaw.
Formulation	Phosphate-buffered solution, pH 7.2.
Endotoxin	< 1 EU/mg, determined by LAL gel clotting assay

Version:3.2

Data Examples

Flow cytometry

H_CLDN18.2 PAN02 Cell Line was stained with Anti-CLDN18.2 hIgG1 Antibody(LM-102) (Catalog # GM-81801AB) or isotype control antibody, followed by anti-Human IgG APC-conjugated Secondary Antibody.

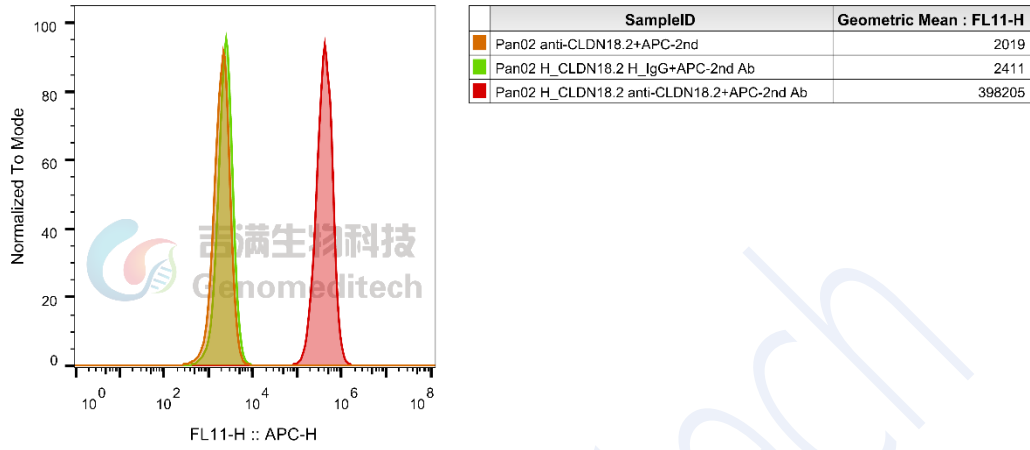


Fig. FACS